



## RDS Business Reference Suite

by Gail Urigo, Librarian, HSL-Business, Science & Technology Section

**RDS Business Reference Suite** is an exciting business reference collection by Thomson Gale. There are three business databases from Responsive Database Services (RDS): *Business & Industry* (B&I), *Business & Management Practices* (BaMP), and *TableBase*. You may search one or two

*The suite features more than 1,400 leading worldwide business sources plus thousands of tables with statistical data.*

or all three databases simultaneously. The suite features more than 1,400 leading worldwide business sources plus thousands of tables with statistical data. Sources include journals, trade publications, general business press and newspapers, newsletters and international business dailies. Suite coverage is over 60% full text and over 45% international coverage.

*Business & Industry* (B&I) is a multi-industry database with a strong focus on company, product and industry information. It is updated daily.

*Business & Management Practices* (BaMP) emphasizes the practical side of business and management. It is a good source for methods, techniques and practices. Topics can include benchmarking, promotion, best practices and much more. It is updated weekly.

*TableBase* provides thousands of tables of data for market research. It covers companies, industries, products, and demographics.

RDS is easy to search and understand. It offers industry names, SIC codes, and concept terms such as market

share or industry trends. One can limit searches by geography (state, country, region) and date.

If you're interested in comparing Best Buy & Circuit City regarding electronic products, you can search B&I and TableBase. Type in Best Buy for *Company Name*. Add the words Circuit City and for *Industry* choose: Consumer Electronics. The result is a listing of many articles and tables. Tables include data on the top consumer electronic retailers.

If you want to see what the airlines are doing with pension plans, search BaMP. For *Industry Term* choose: Airlines, for the *Concept Term*: pension plans. There are some very timely articles on the topic.

### How to Access this Database:

To give this a try, go to <http://www.state.hi.us/libraries/hsl/databases.html>. Click on "RDS Business Reference Suite." Type in your library card number. Click on "Proceed." Select the database(s) to view.

RDS opens up a whole new world of business information. Explore its possibilities in the coming new year. See how it can serve your business information needs.

## BOE Approves New HSPLS Organization Statement

The Board of Education voted to approve its "Mission, Vision, and Goals Statement for Hawai'i's Public Libraries," at the Nov. 17, 2005 General Business Meeting:

### Mission:

The mission of the Hawai'i State Board of Education is to promote excellence and equity in public library services so that all individuals can meet their reading, information, and life-long learning needs.

### Vision:

Hawai'i's public libraries are safe, inviting, resource-rich learning environments engaging the minds and enhancing the lives of all community members.

### Goals:

The Board of Education, through effective Board leadership, will:

1. Develop policies and strategies to acquire additional resources to expand facilities and materials.
2. Actively provide support services and collections to meet the public's recreational, informational, cultural, and educational needs.
3. Proactively build confidence in the public libraries, establish communication with stakeholders, and build strong partnerships with the community.
4. Ensure that the public library system recruits and retains highly qualified personnel.
5. Adopt policies and advocate for sufficient financial and human resources to ensure that all public libraries are safe and secure learning and working environments.
6. Strengthen the information technology infrastructure to provide convenient online resources and services and streamline labor-intensive operations.
7. Develop demonstration programs and pilot projects to meet diverse and/or emerging needs and improve services and collections.

Approved: 11/17/05



**Holo I Mua** (*move forward, advance*) is published monthly by the Hawai'i State Public Library System Library Development Services 3225 Salt Lake Blvd., Suite 205 Honolulu, Hawai'i 96818 Telephone 831-6877 Website: [www.librarieshawaii.org](http://www.librarieshawaii.org)

Jo Ann Schindler, *State Librarian*

Paul H. Mark, *Editor*

Board of Education:

For info. visit: [www.boe.k12.hi.us](http://www.boe.k12.hi.us)

Randall M.L. Yee, *chairperson*

Karen Knudsen, *1st vice chairperson*

Herbert Watanabe, *2nd vice chairperson*

Darwin Ching Denise Matsumoto

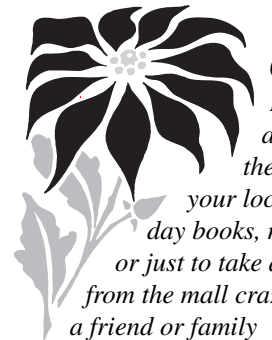
Maggie Cox Shirley A. Robinson

Mary J. Cochran Garrett Toguchi

Breene Harimoto Paul Vierling

Cec Heftel Darren Ibara,

Lei Ahu Isa *student representative*



*Seasons Greetings Happy Holidays and Best Wishes for the New Year! Visit your local library for holiday books, music, and movies or just to take a refreshing break from the mall craziness. Encourage a friend or family member to apply for a library card and initiate a love of reading and life-long learning. What a gift!*



Aloha,  
Jo Ann Schindler, *State Librarian*

## Mahalo Hawai'i for Your Support

The Hawai'i State Public Library System would like to say mahalo nui loa to the thousands of Hawai'i taxpayers who donated a portion of their 2004 tax refunds to help support our public libraries! Act 193 (HB 638) provided a check-off box on State individual income tax returns which allowed taxpayers an opportunity to support the state library system. As of June 30, 2005, over \$87,000 had been collected by the state Department of Taxation for the Hawai'i State Public Library System's Special Fund. Your \$2 tax refund donations (\$4 for a joint return) are greatly appreciated, and are being used to purchase books and other library materials for all ages to enjoy.

If you love and value your public libraries, please consider doing this again, or for the first time, when you file your 2005 income tax returns next year. Show your support for public libraries by remembering to mark the appropriate check-off box on your 2005 State Individual Income Tax Return Form.

# Holo I Mua

Hawai'i State Public Library System

December 2005

## Celebrate this Holiday Season @ your library

By Paul H. Mark

It's beginning to look a lot like Christmas . . . @ your local library! Public libraries statewide are scheduled to offer a variety of entertaining programs for this Holiday Season. Here is a sampling of the programs; admission is free:

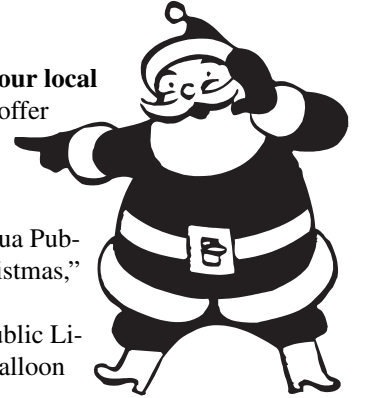
- **Travelling Storytellers**, Dec. 10, 10:30 a.m., Kailua Public Library (ages 3 - up); experience the "Songs of Christmas," a holiday tradition.
- **Pockets the Clown**, Dec. 11, 1 p.m., Pearl City Public Library (all ages); features a magic show w/live bunny; balloon sculptures.
- **Puppet Times with Christy Lipps**, Dec. 13, 10:30 a.m., Mililani Public Library (ages 3 - up). This puppeteer will take you on an enchanting journey, bringing to life many Christmas stories, finger plays and songs; sponsored by Friends of Mililani Public Library.
- **Bunge the Clown**, Dec. 13, 10:30 a.m., Waipahu Public Library (ages 3 - up); features a magic show w/live bunny; balloon sculptures; sponsored by Friends of Waipahu Public Library.
- **Special Appearance by Santa Claus**, Dec. 19, 2 p.m., 'Ewa Beach Public & School Library (all ages). Santa will read aloud stories and pose for photos with children (parents/caregivers may bring their cameras). All young children must be accompanied by a parent/caregiver; sponsored by Friends of 'Ewa Beach Library.
- **Jolly 'Jammy Christmas Party**, Dec. 19, 5:30 p.m., Hawai'i Kai Public Library (ages 3 - up). Children are invited to come dressed in their pajamas; program includes: "magical twists" by Balloon Monsoon, a storytime featuring Chris Van Allsburg's "The Polar Express," a holiday craft, goodie bags for the first 50 people, door prizes, and light refreshments; sponsored by Friends of Hawai'i Kai Library.
- **Special Christmas Storytime**, Dec. 21, 10:30 a.m., 'Aiea Public Library (ages 3 - up); staff librarians will read aloud favorite Christmas stories; light refreshments.
- **Mystery Christmas Movie**, Dec. 22, 5:30 p.m., Wahiawā Public Library (all ages); call 622-6345 to find out the name of the movie.

Call the hosting library 7 - 10 days in advance if a sign language interpreter or other special accommodation is needed for any of these programs. Programs are subject to change. For a complete listing of our Holiday Season programs, visit the HSPLS website: [www.librarieshawaii.org](http://www.librarieshawaii.org).

### Mark Your Calendars

**Dec. 24-25 – Christmas Day holiday**, all libraries closed. Most libraries will also be closed on Dec. 26. Call your local library for holiday hours or visit: [www.librarieshawaii.org](http://www.librarieshawaii.org).

**Dec. 31-Jan. 1, '06 – New Year's Day holiday**, all libraries closed. Most libraries will also be closed on Jan. 2, 2006. Call your local library for holiday hours or visit: [www.librarieshawaii.org](http://www.librarieshawaii.org).



# Christmas DVDs @ Your Library

By Sally Walstrum, Hawai'i State Library

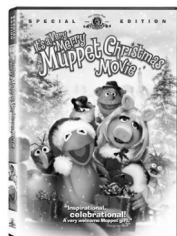
## ELF

Will Ferrell stars as a young orphan child who mistakenly crawls into Santa's bag and is transported back to the North Pole and raised as an elf. Years later, Buddy learns he is not really an elf and goes on a journey to New York to find his true identity.



## IT'S A VERY MUPPET CHRISTMAS MOVIE

On Christmas Eve, an angel petitions God to send help for Kermit the Frog who has lost all hope after losing the Muppet Theatre. What ensues is a hilarious, heartwarming story reminiscent of *It's a Wonderful Life* that parodies many classic holiday films.



## THE POLAR EXPRESS

An animated tale featuring the voice of Tom Hanks, about a doubting young boy who takes an extraordinary train ride to the North Pole. There he embarks on a journey of self-discovery that shows him that the wonder of life never fades for those who believe.



## RUDOLPH THE RED-NOSED REINDEER

See the classic 1964 stop-motion animation television special. Burl Ives narrates the tale of a rejected reindeer that



overcomes prejudice and saves Christmas from being cancelled by guiding Santa's sleigh through a blustery storm.

## THE SANTA CLAUSE

Tim Allen stars as an ad man that takes over for the bearded-and-bellied fellow after a rooftop mishap on Christmas Eve. When the night ends, he discovers that by donning the fabled red suit, he's inadvertently agreed to become the next Santa Claus.



## WHITE CHRISTMAS

Bing Crosby, Danny Kaye, and Rosemary Clooney star in the classic 1954 musical about two guys that team up with a sister act to become a popular song-and-dance team at a Vermont Lodge. Features songs by Irving Berlin.



## Kapolei Librarian is '05 Librarian of Year

Mary Ann Collignon, Young Adult Librarian of Kapolei Public Library, has been selected as the 2005 Public Librarian of the Year by the Friends of the Library of Hawai'i.

Collignon, a 15-year veteran of HSPLS, was nominated for her outstanding work as the Young Adult Librarian of the system's newest library, where she has served since July 2004. She was chosen for her dedication, enthusiasm and commitment to her job, community service, and promotion of public libraries in the community.

The public is invited to attend the 2005 Public Librarian of the Year Awards Ceremony on Dec. 15 from 6 p.m. - 8 p.m. at the Hawai'i State Library. At this



Collignon

ninth annual awards ceremony, Collignon will be honored and presented with the award, and corporate sponsor Borders Books, Music and Café will present a cash prize of \$1,000 to her library, the Kapolei Public Library. The Friends will also present an additional \$500 to Kapolei Library, which will be used to purchase library materials.

Three other finalists for this year's award will receive monetary awards for their libraries: **Janet Lam** of Thelma Parker Memorial Public and School Library on the Big Island; **Cynthia Frazer** of Kailua Public Library, and **Stewart Chun** of the Hawai'i State Library's Federal Documents Section.

It's no surprise that Collignon was nominated by a young adult, Deidrick Ann Willing, who wrote, "Mary Ann Collignon deserves to be the Public Librarian of the Year because she is a well-rounded respected individual who is dedicated and committed to her work."

Collignon has served in several O'ahu public libraries in various positions such as a bookmobile librarian, outreach librarian, head librarian, and children's librarian, before finding her niche in 1994 as a young adult librarian.

"I am thrilled to have been part of teen services in the public library system for the past 11 years," said Collignon. "The extent and diversity of teen literature today is just phenomenal and really exciting. Public libraries with free access to a wealth of knowledge and information are a terrific asset for our young adults as they prepare to become the next generation of citizens in an increasingly complex global community."

A professional librarian since 1984, Collignon has also served in libraries in Williamsburg, Va., and at the U.S. Naval Station in Rota, Spain. She received her Bachelor of Arts degree from the University of North Carolina followed by a Master of Science degree from Pratt Institute, Graduate School of Library and Information Science in Brooklyn, N.Y.

The Friends of the Library of Hawai'i sponsors the annual Public Librarian of the Year award program to recognize excellence in the Hawai'i State Public Library System.

## New Teen Titles

By Mary Ann Collignon, Kapolei Public Library

Julius Lester

### Day Of Tears: A Novel In Dialogue

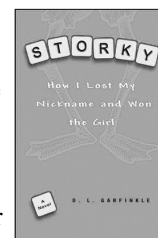
(Gr. 7 – up) In 1859, the largest slave auction in American history took place in Savannah, Ga. – an event known as "The Weeping Time." Pierce Butler had promised Emma's parents that he wouldn't sell the 12-year-old slave girl, who had cared for his own daughters. But desperate to pay off his gambling debts and last-minute greed betrays that trust at the cost of his humanity and Emma's.



D. L. Garfinkle

### Storky: How I Lost My Nickname And Won The Girl

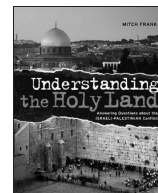
(Gr. 7 – up) High school freshman Mike Pomerantz doesn't have high expectations for the coming year, especially since everyone still calls him by his hated nickname Storky (due to his tall, skinny, wiry looks).



Mitch Frank

### Understanding The Holy Land: Answering Questions About The Israeli-Palestinian Conflict

(Gr. 7 – up) A complex issue is broken down in a Q&A format to objectively attempt an understanding by teens of this bitter conflict. Considered holy land by three of the world's major religions, Israel's location has been the center of strife and dispute for centuries.



Jordan Sonnenblick

### Drums, Girls & Dangerous Pie

(Gr. 6 – up) While 13-year old jazz drummer Steven Alper pines after Renee, the hottest girl (Annette) in the 8th grade won't leave him alone. When Steven learns that his younger brother has



leukemia, he tries to become a source of strength for his brother while nearly falling apart himself.

Cecil Castellucci

### boy proof

(Gr. 9 – up) 16-year-old Victoria doesn't care that she has no friends. Renaming and dressing herself like Egg, a favorite character in a sci fi blockbuster, she considers herself "post-apocalyptic" and boy proof – too smart and tough to be appealing to guys, superior in every way to her classmates.



## Update:

## ADA Renovations

- **Kea'au Public & School Library** (Big Island) – library and book drop closed from 10/10/05 through early 1/06 for air-conditioning/duct work system replacement project. Pick up reserved library materials at Hilo Public Library. An announcement will be made for reopening date.
- **Mānoa Public Library** – book drop and library closed from 12/7/05 – 1/28/06 for renovation, repaving, and re-stripping of the parking lot, and the installation of a fire alarm system. Partial phone-in service available Monday – Friday, from 10 a.m. - 5 p.m. for renewal of books/other library materials, and for reference assistance. Pick up reserved library materials at McCully-Mō'ili'ili Public Library or at any other library. Call 988-0459 for assistance. Scheduled reopening date: 1/30/06, however an announcement will be made to confirm/revise this date.
- **Kalihi-Pālama Public Library** – book drop and library closed from 12/19/05 for handicapped-accessibility upgrades to the parking lot, including re-paving, and the re-stripping of stalls. Customers may visit either the Liliha Public Library or Salt Lake-Moanalua Public Library to return books and other materials, as well as to fulfill their library services needs. Scheduled reopening during week of 1/17/06, however an announcement will be made to confirm/revise this date.

• **Hawai'i Kai Public Library** – book drop and customer parking lot closed 12/22/05 – 1/1/06 for paving of handicapped-accessible parking stall. Library will be open on 12/22, and 12/26-29. Library materials may be returned when library is open, or to another public library that is open. An announcement will be made to confirm/revise the reopening date of the book drop and parking lot.

Visit [www.librarieshawaii.org](http://www.librarieshawaii.org) for more information.

## Hours Increased at Two O'ahu Libraries

Library customers will be delighted to know that two O'ahu public libraries are extending their public service schedules.

**Kāne'ohe Public Library** extended its public service schedule on Dec. 4, adding nine hours including an additional day per week.

After 2½ years of reduced public service hours, in which the Kāne'ohe Library staff worked diligently to fill most of its vacancies, this library now offers one more evening (Monday) and one afternoon (Friday) to its hours of operation. In addition, this library has lengthened its hours on Wednesdays, opening two hours earlier at 10 a.m.

The new 6-days per week public service schedule for Kāne'ohe Public Library is: Sunday, Tuesday, Thursday, 10 a.m. to 5 p.m.; Monday and Wednesday, 10 a.m. to 8 p.m.; Friday, 1 p.m. to 5 p.m.; and Saturday, Closed.

**Kalihi-Pālama Public Library**, which will be closed for an ADA renovation project beginning Monday, Dec. 19, will reopen with an extended 6-days per week public service schedule during the week of Jan. 17, 2006.

Kalihi-Pālama Public Library will reopen with the addition of one full day – Saturday (eight hours) to its schedule.

When the Kalihi-Pālama Public Library reopens, its new public service schedule will be: Monday and Wednesday, 1 p.m. to 8 p.m.; Tuesday, Thursday, Friday, Saturday, 9 a.m. to 5 p.m.; and Sunday, Closed.